



healthwatch
Bracknell Forest

healthwatch
Windsor and
Maidenhead

healthwatch
Slough

Bracknell Forest residents tell us What Matters Most when it comes to health and social care services

We asked residents across East Berkshire to tell us What Matters Most when it comes to their health and social care services. We ran the survey from March to May and 155 Bracknell Forest residents shared their view with us. The report highlights areas for concern as well as positive experiences of our local health and care services.

We asked which services people thought Healthwatch Bracknell Forest should focus on in the coming year and the results were:

32% said GP Services

21% said Mental Health Services

19% said Access to Services

Thank you to everyone who participated in the survey and shared their voice with us. Our next steps will involve further projects looking closer into Bracknell Forest residents' comments and experiences of local health and social care services.

[Read full report](#)

Healthwatch News



REPORT:

[Healthwatch England](#) has launched the [Locked Out: Digitally excluded people's experience of remote GP appointments](#) report. Working with five local Healthwatch, Healthwatch England spoke to people more likely to experience digital exclusion, to understand how this has affected their access to care during the pandemic.

Key report findings

- People are digitally excluded for various reasons including digital skill level, affordability of technology, disabilities, or language barriers.
- Services frequently overlooked individual support requirements.
- There's no one size fits all solution when it comes to remote appointments.
- Staff at GP Practices acknowledged that a better balance between face-to-face and remote methods is needed.

[Read the report in full](#)



REPORT:

VacciNation: Exploring vaccine confidence

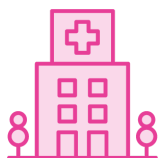
Healthwatch England's new research explores vaccine confidence amongst people from African, Bangladeshi, Caribbean, and Pakistani backgrounds. [Find out more.](#)

Become a Healthwatch Board Member.

We are looking for people with relevant knowledge and experience and a commitment to want to see better outcomes in health and care for the residents of Bracknell Forest. [Find out more.](#)



East Berkshire News



Pioneering radiotherapy technology, which will revolutionise the way some cancer patients are treated, is being launched at the Berkshire Cancer Centre (BCC), based at Reading's Royal Berkshire NHS Foundation Trust (RBFT). [Find out more.](#)



How to stay safe sexually and avoid STIs: Berkshire's Public Health team has launched a new campaign to help educate people on why it's essential to 'stay safe sexually' by avoiding STIs (Sexually Transmitted Infections) and in particular, HIV (Human Immunodeficiency Virus). Through the [Safe Sex Berkshire website](#), residents can learn how best to protect themselves against HIV infection by considering using the anti-HIV preventative treatments.

Bracknell Forest News



Surge testing has started in the GU47 0 postcode area of Bracknell Forest, to help try and reduce the spread of the COVID-19 Delta variant locally. The council is urging all residents over the age of 11 (Year 7) who are living or working in the GU47 0 postcode area to come forward for a COVID-19 PCR test from now until 30 June, provided they are not showing symptoms. An [interactive map](#) is available to find out if your address is included. [Support is available](#) for those having to self-isolate, or who are clinically extremely vulnerable.

Testing sites will be open until 30 June at:

Pyes Acre car park (8am to 2pm 3pm to 8pm)

Sandhurst Memorial Hall car park (8am to 2pm 3pm to 8pm)

Owlsmoor Community Centre car park (8am to 8pm)

Bracknell Leisure Centre (2pm to 8pm)

Morgan Recreation Ground car park (8am to 8pm on 19, 21, 22, 23, 24, 26, 28, 29, 30 June)

More information on surge testing in Bracknell Forest can be found on the [council's website](#).



Foster carers needed this Foster Care Fortnight

In Bracknell Forest, there is a particular need for foster carers of teenagers, sibling groups and children with complex needs. Without more people coming forward to foster, children may have to live in residential institutions, or with foster families far from home. This often means children leaving their family and friends, split up from their siblings, and moving schools. Many of the children will have suffered neglect or abuse, all will have experienced trauma and loss.



The Work Outfit

Fitness aerobics classes in Bracknell and Flackwell Heath for all round energy and fun.

Web: <http://www.aerobicise.co.uk/>

Other News



The Care Quality Commission (CQC) - The independent regulator of health and social care in England has launched an online resource to support culturally appropriate care. It has examples and good practice to help care providers think about different ways people's culture might affect the way they wish to receive their care and support. [Find out more here.](#)



Living well with bowel cancer event. Saturday 19 June 2021 10.30am - 2pm. Free virtual information and support event is for anyone affected by bowel cancer. Patients will hear about how to cope with their cancer diagnosis, live better with the disease and managing the side effects of treatment. It's an opportunity to also hear from other people affected by bowel cancer and share experiences with others. To register and for more information visit www.bowelcanceruk.org.uk or email supportevents@bowelcanceruk.org.uk



Please remember if you are doing regular Lateral Flow Tests (LFTs) at home and you test positive, you must follow this result up with a confirmatory PCR test. PCR testing remains the 'Gold Standard' for testing, as the Lateral Flow Tests cannot be completely relied upon. Getting a PCR test will help the contact tracing effort and variant testing in your county. You can book a PCR test by calling 119 OR [book here.](#)

First Aid Training June 22nd - Tuesday at 11.30am. An interactive workshop, run by the British Red Cross, where you will learn four first aid skills and have the opportunity to ask questions. The aim is to build confidence so you can help someone in a first aid emergency, using everyday objects that you have around you. [Book here.](#)

Subscribe

Past Issues

Translate ▼

RSS



Contact us: 0300 0120184 - 10am to 4pm

healthwatch
Bracknell Forest



Facebook



Twitter



Instagram



Website



Email

healthwatch
Windsor and
Maidenhead



Facebook



Twitter



Instagram



Website



Email

healthwatch
Slough



Facebook



Twitter



Instagram



Website



Email

Copyright © 2021 Healthwatch Slough, All rights reserved.

[unsubscribe from this list](#) [update subscription preferences](#)



Please do not publish or reproduce this newsletter in full.

